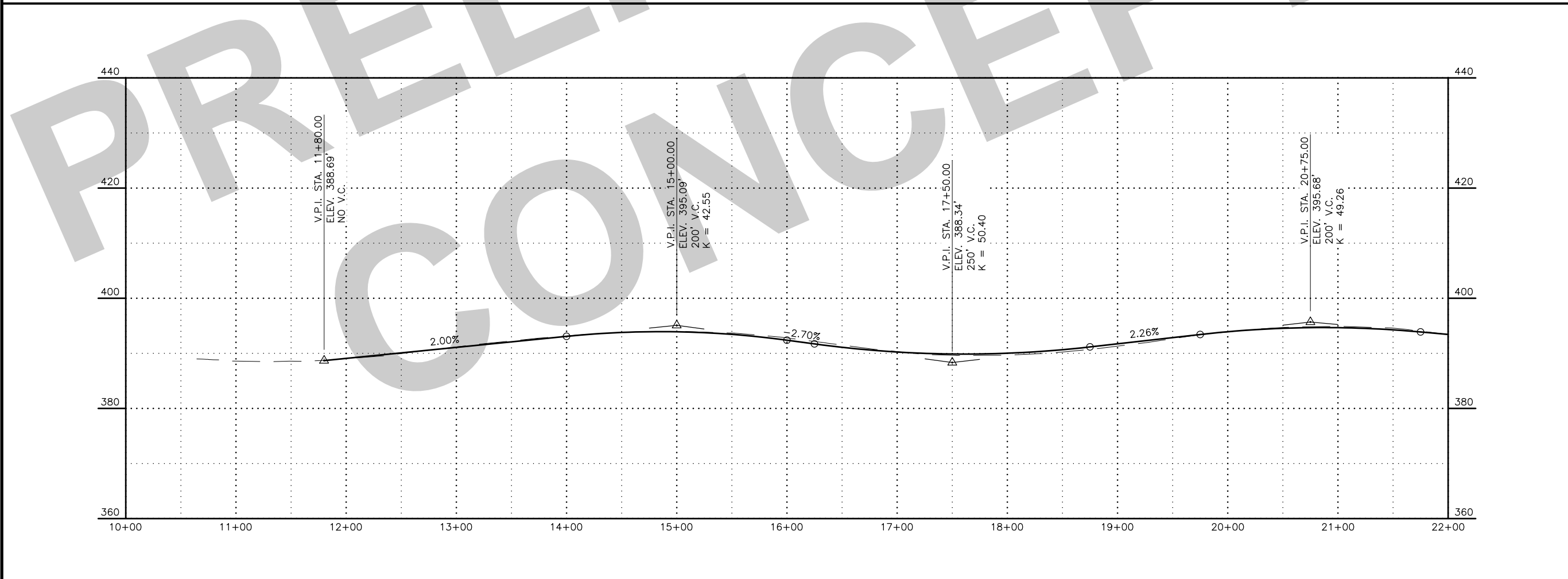
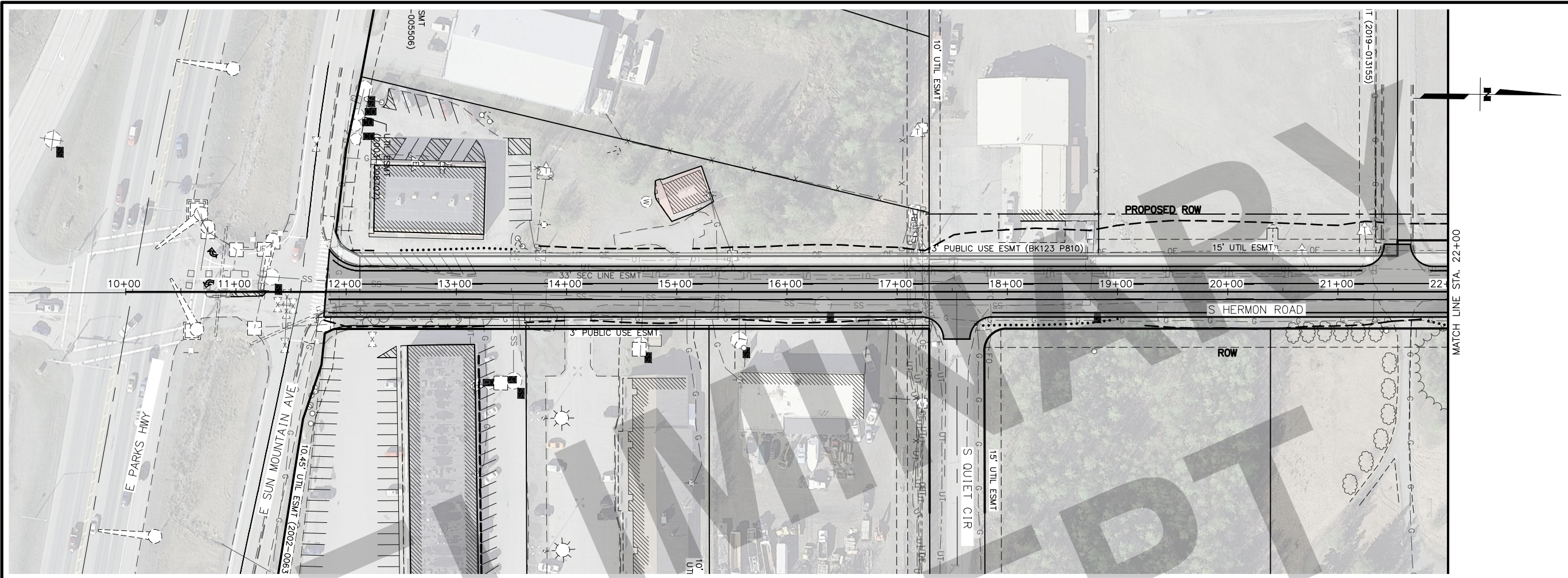


DATE: 3/8/2023 10:20 AM
 TIME: 10:20 AM
 SCALE: 1" = 50'
 DESIGNED BY: DKH
 CHECKED BY: ISM
 DRAFTED BY: DKH

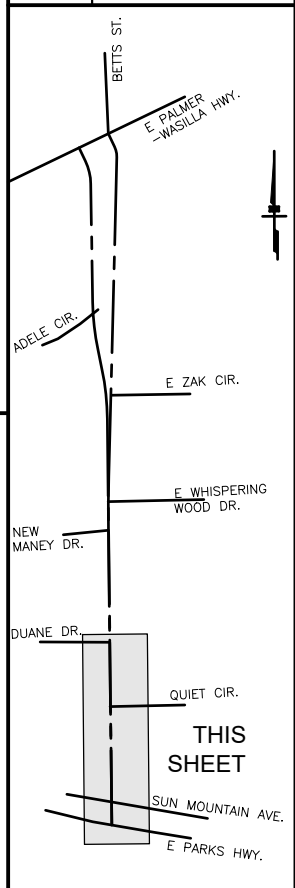
DRAWING LOCATION: C:\DOWL_PW\00399287\00799_F_P&P.DWG



SHEET NO.	TOTAL SHEETS
F1	F4
STATE	YEAR
ALASKA	2024

PROJECT DESIGNATION
**0001729/
 CFHWY00799**

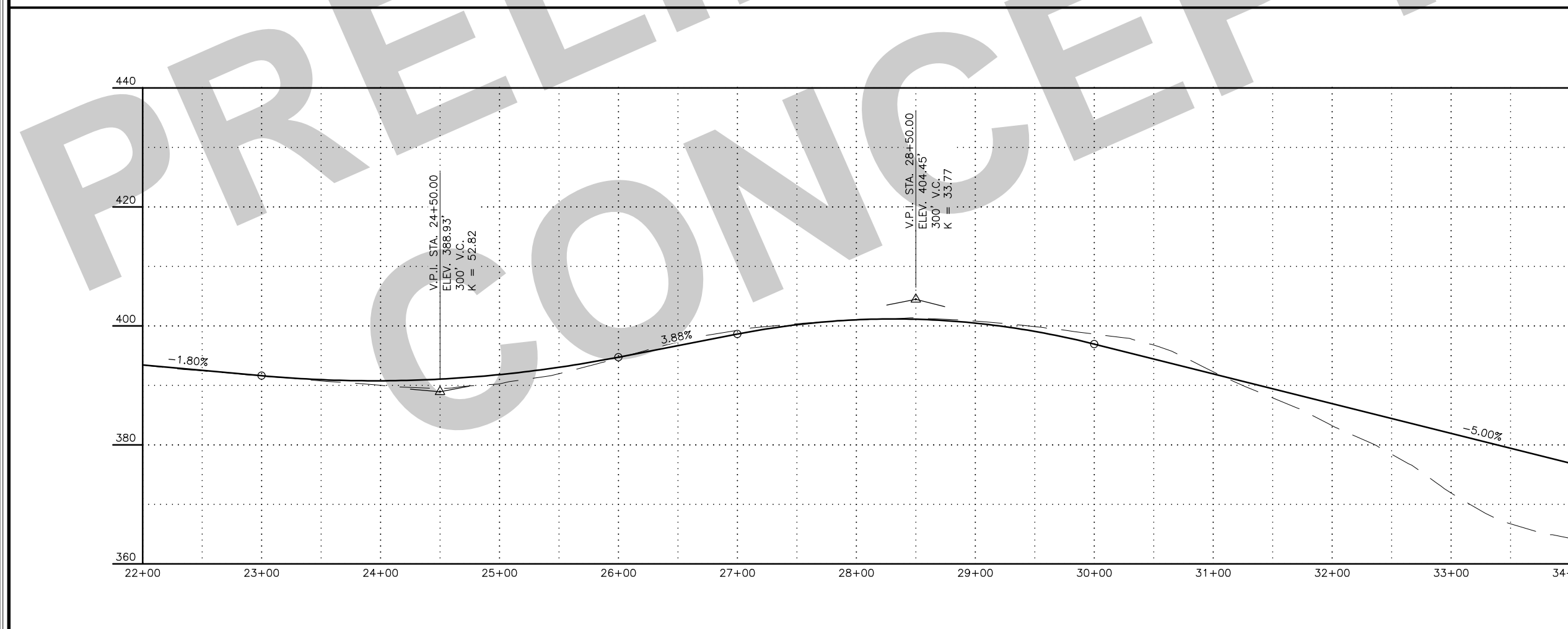
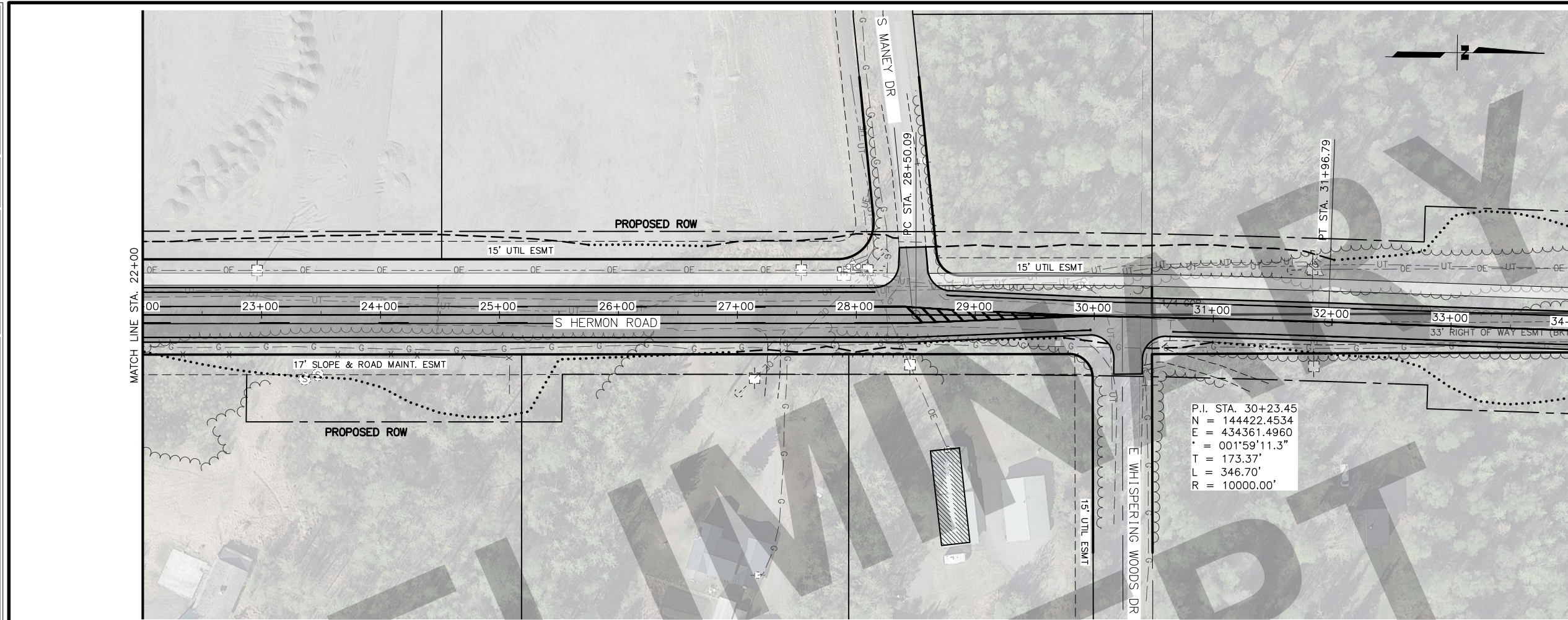
NO.	REVISION



STATE OF ALASKA
 CONCEPT REVIEW
 PROFESSIONAL ENGINEER
 DOWL, LLC
 5015 BUSINESS PARK BLVD
 SUITE 4000
 ANCHORAGE, AK 99503
 (907) 562-2000
 #AECL848 - AK

STATE OF ALASKA
 DEPARTMENT OF TRANSPORTATION
 AND PUBLIC FACILITIES
**HERMON ROAD
 PARKS HIGHWAY TO
 PALMER-WASILLA HIGHWAY
 HERMON ROAD
 STA 11+80 TO
 STA 22+00**

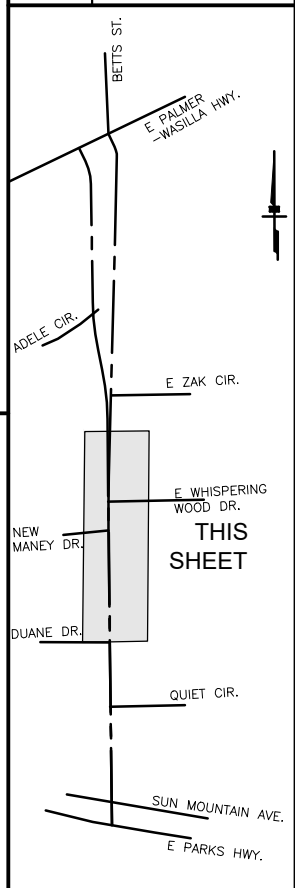
DESIGNED BY: DKH
 CHECKED BY: ISM
 DRAFTED BY: DKH
 SCALE: 1" = 50'
 DATE: 3/8/2023 10:23 AM
 TIME:



SHEET NO.	TOTAL SHEETS
F2	F4
STATE	YEAR
ALASKA	2024

PROJECT DESIGNATION
**0001729/
 CFHWY00799**

NO.	REVISION



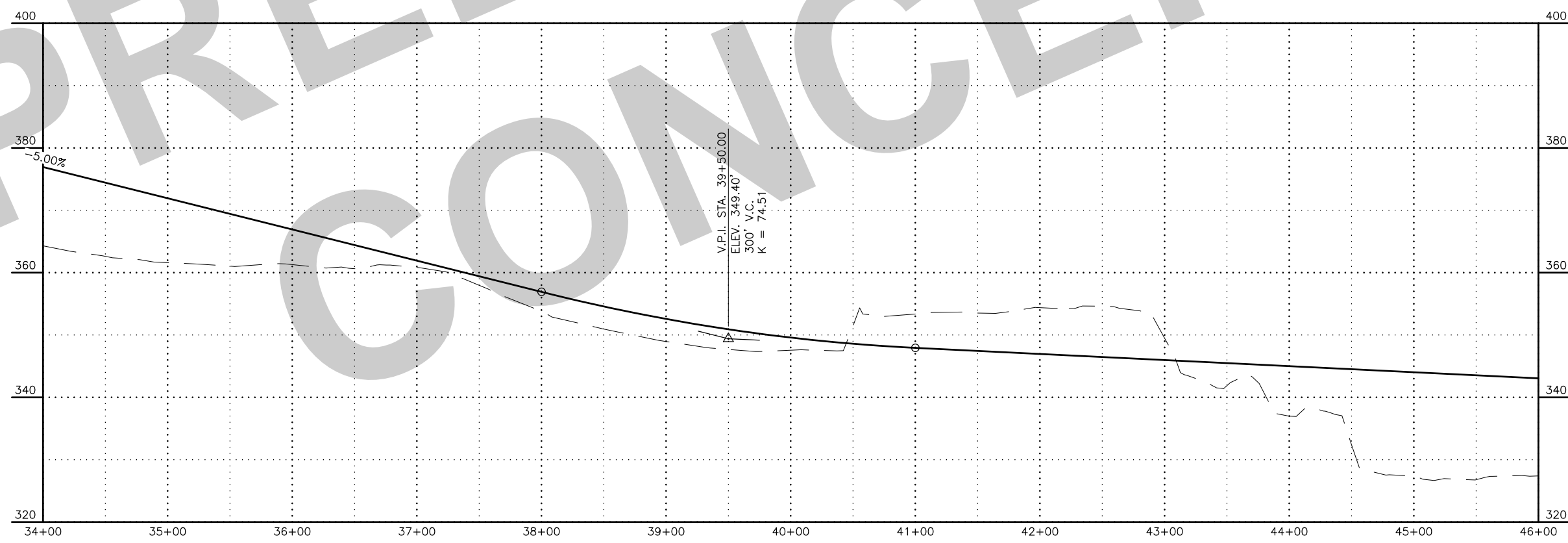
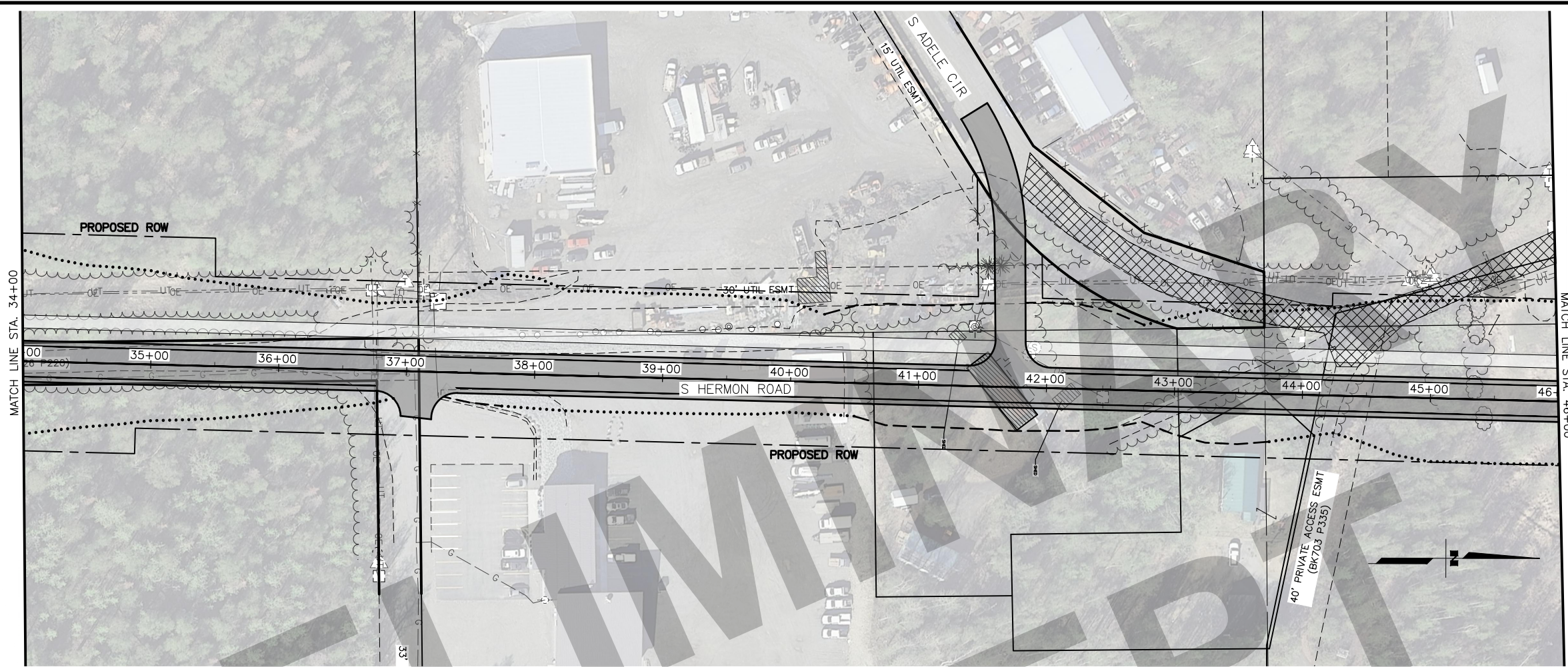
STATE OF ALASKA
 DEPARTMENT OF TRANSPORTATION
 AND PUBLIC FACILITIES
**HERMON ROAD
 PARKS HIGHWAY TO
 PALMER-WASILLA HIGHWAY
 HERMON ROAD
 STA 22+00 TO
 STA 34+00**

DRAWING LOCATION
 C:\DOWL_PW\00399287\00799_F_P&P.DWG

DESIGNED BY: DKH
 CHECKED BY: ISM
 DRAFTED BY: DKH

DATE: 3/8/2023 10:20 AM
 TIME: 10:20 AM
 SCALE: 1" = 50'

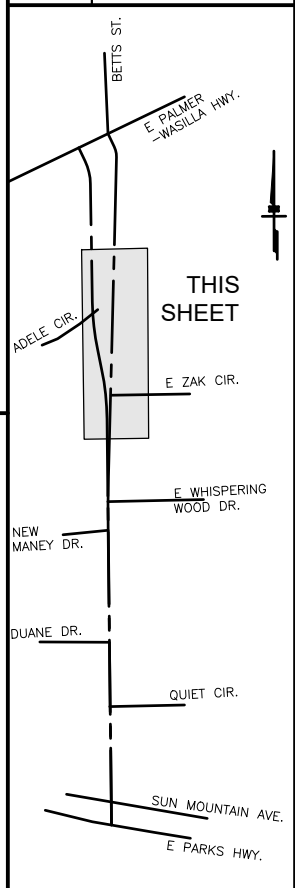
DRAWING LOCATION: C:\DOWL_PW\00399287\00799_F_P&P.DWG



SHEET NO.	TOTAL SHEETS
F3	F4
STATE	YEAR
ALASKA	2024

PROJECT DESIGNATION
 0001729/
 CFHWY00799

NO.	REVISION



STATE OF ALASKA
 CONCEPT REVIEW
 PROFESSIONAL ENGINEER
 DOWL, LLC
 5015 BUSINESS PARK BLVD
 SUITE 4000
 ANCHORAGE, AK 99503
 (907) 562-2000
 #AECL848 - AK

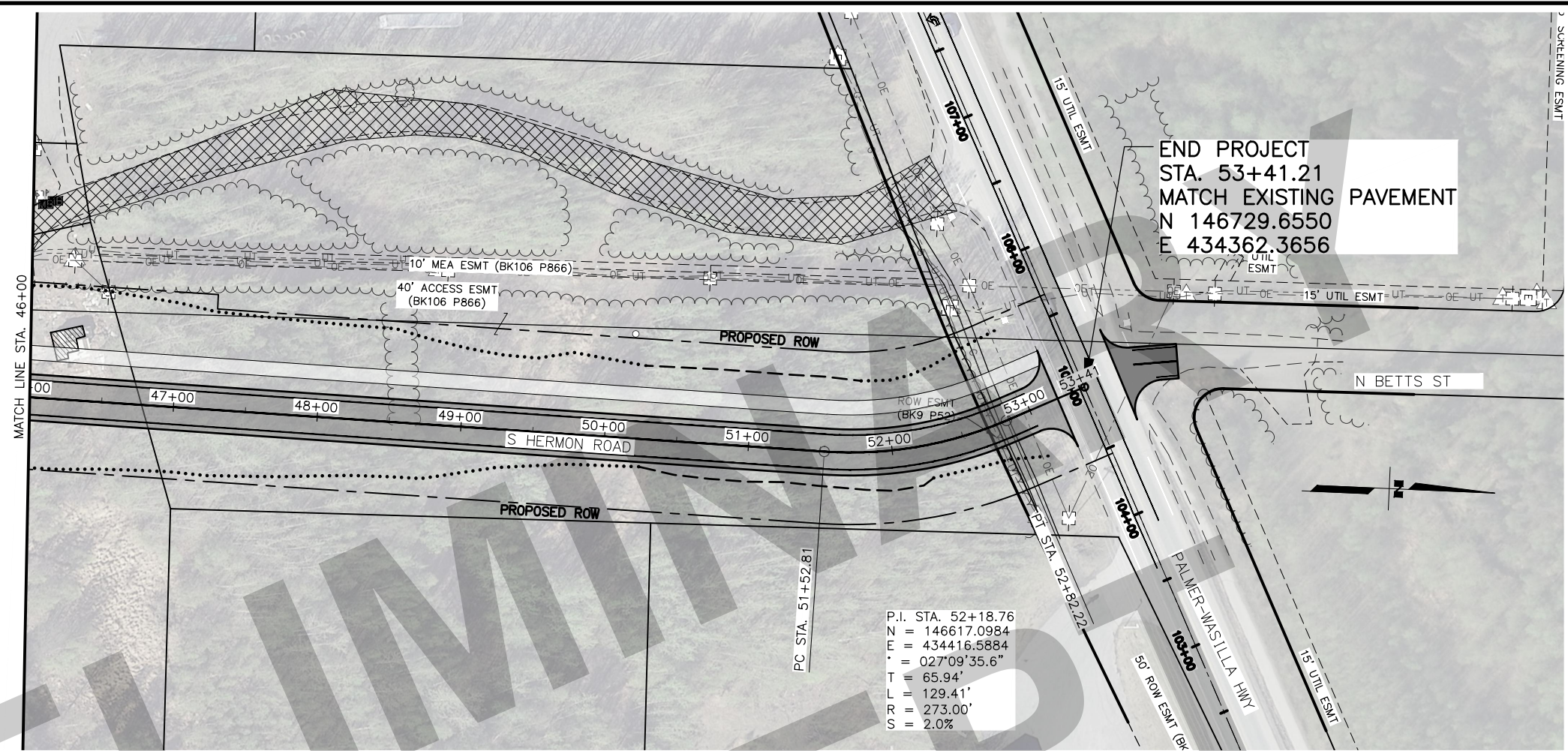
STATE OF ALASKA
 DEPARTMENT OF TRANSPORTATION
 AND PUBLIC FACILITIES
 HERMON ROAD
 PARKS HIGHWAY TO
 PALMER-WASILLA HIGHWAY
 HERMON ROAD
 STA 34+00 TO
 STA 46+00

DKH
 DESIGNED BY
 ISM
 CHECKED BY
 DKH
 DRAFTED BY

SCALE
 1" = 50'

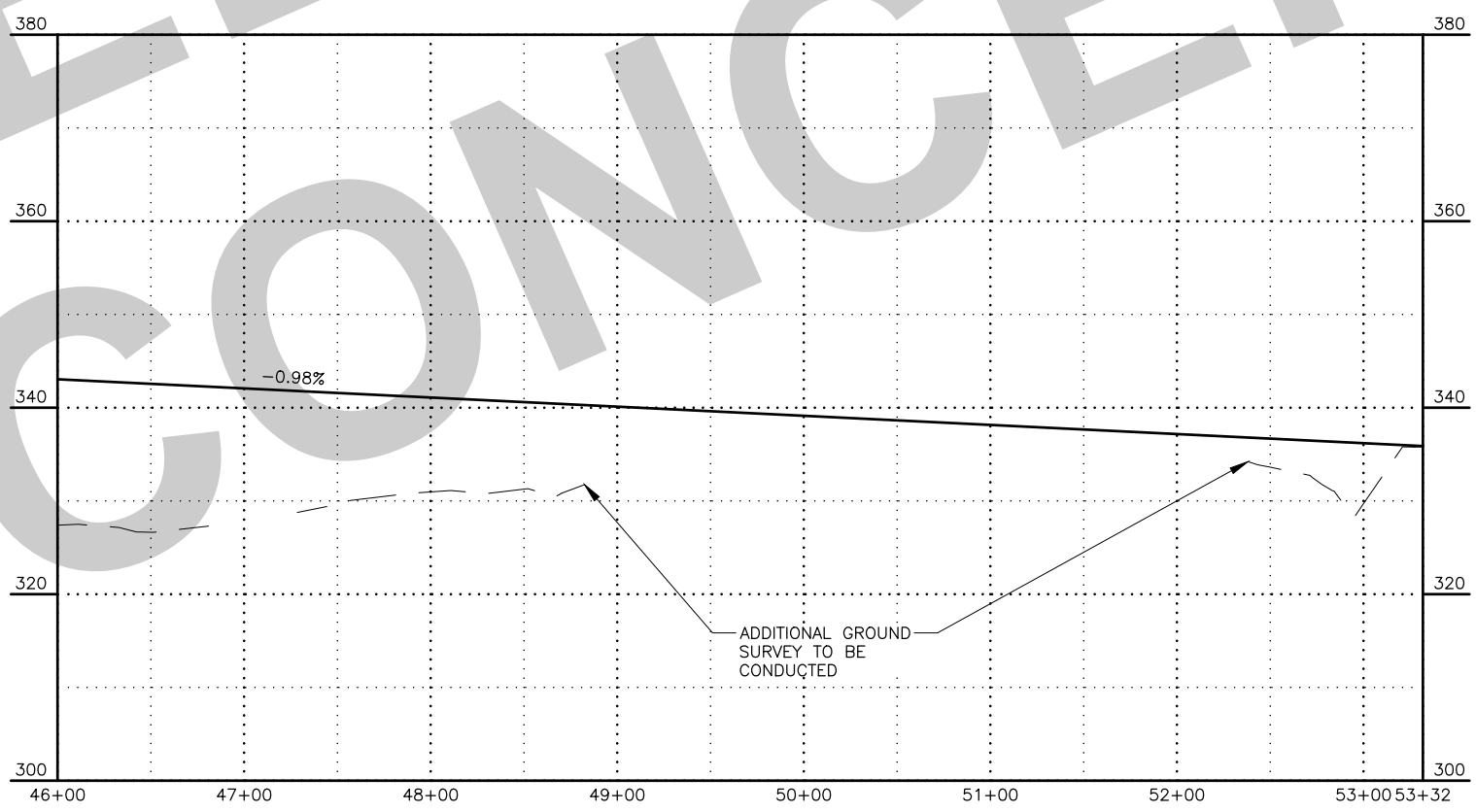
DATE
 3/8/2023 10:20 AM

DRAWING LOCATION
 C:\DOWL_PW\00399287\00799_F_P&P.DWG



END PROJECT
 STA. 53+41.21
 MATCH EXISTING PAVEMENT
 N 146729.6550
 E 434362.3656

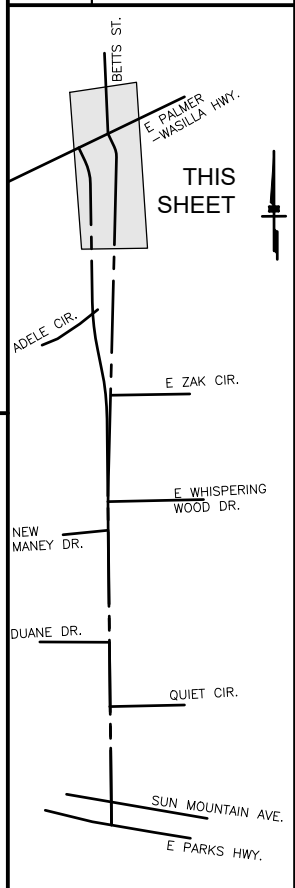
P.I. STA. 52+18.76
 N = 146617.0984
 E = 434416.5884
 Δ = 027°09'35.6\"
 T = 65.94'
 L = 129.41'
 R = 273.00'
 S = 2.0%



SHEET NO.	TOTAL SHEETS
F4	F4
STATE	YEAR
ALASKA	2024

PROJECT DESIGNATION
 0001729/
 CFHWY00799

NO.	REVISION



DOWL, LLC
 5015 BUSINESS PARK BLVD
 SUITE 4000
 ANCHORAGE, AK 99503
 (907) 562-2000
 #AECL848 - AK

STATE OF ALASKA
 DEPARTMENT OF TRANSPORTATION
 AND PUBLIC FACILITIES
 HERMON ROAD
 PARKS HIGHWAY TO
 PALMER-WASILLA HIGHWAY
 HERMON ROAD
 STA 46+00 TO
 EOP